

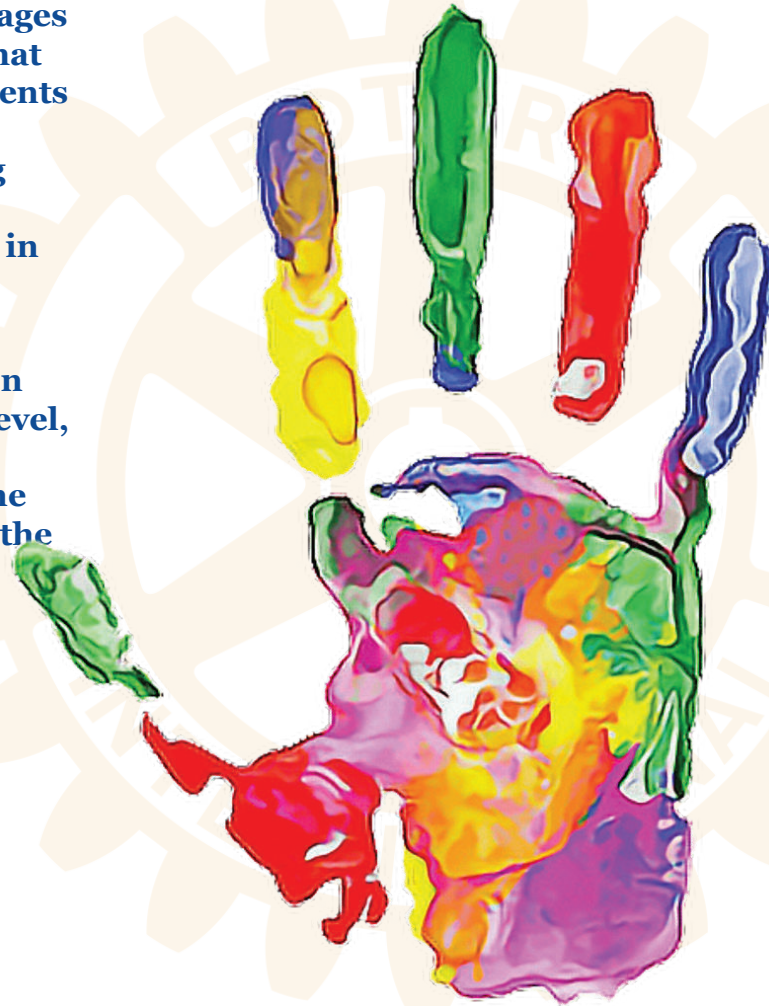
For All High School Students in RI District 5300

PURPOSE

This contest promotes the importance of ethics among today's youth and encourages them to express their views. We hope that each student will consult with their parents and teachers for this essay in an effort to build communication between young people and adults regarding ethics. We also wish to enhance Rotary's presence in schools and in the community.

PROCESS

1. The contest is held on two competition levels: First at the local Rotary club level, and second at the District level. The student who wins first place at the Club level automatically advances to the District level. Select Club member to chair contest.
2. Contact local high school counselors to promote student participation in contest.
3. Ask that the essay become a class project and submit essays to participating Club for local judging.
4. Schedule a program in which the winner and runners'-up of your local contest are recognized. Your Club can award scholarships to the Club winner and runners'-up with club funds in addition to the district prize.



5. Submit the winning Club essay to the District Chair for District-level judging at districtessaycontest@mtbrotary.org

ESSAY TOPIC

- Write on an ethical dilemma that has touched your life.
- Include your view of the importance of ethics in this particular situation.
- You must include your personal definition of ethics.

RULES

- You must be enrolled in a high school or live in District 5300. And, you must be in the 9-12 grade on March 31, 2024.
- The essay must be no more than 1,000 or less than 800 words.
- The essay must be the original, unpublished work of the student, and only one essay per student may be submitted.
- The essay must be submitted to local participating Rotary Club for 1st round of competition by April 1.

JUDGING CRITERIA AND PROCEDURES

Only those essays that have followed the "Topics and Rules" may be judged.

1. Clarity of message and presentation of idea (40%)
2. Style and originality (40%)
3. Grammar, spelling, and structure (20%)

NOTE: If your Club's entry is named District winner, be prepared to sponsor your student and parent or mentor to District Assembly to receive award and scholarship.